



RIBEYE AREA

and its value in the market.



RIBEYE AREA GIVES STRONG
**INDICATION OF OVERALL
CARCASS MUSCLING**



RIB ACCOUNTS
FOR
OF CARCASS WEIGHT

9.6%

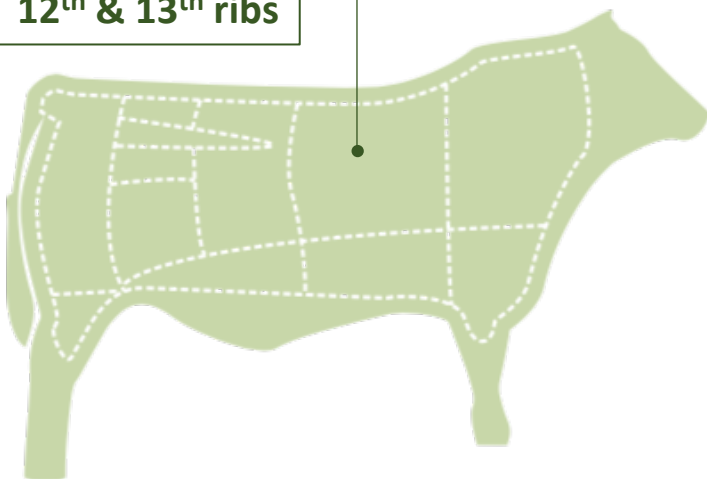


**& OVER
14%
OF ITS VALUE.**

UT Extension PB 1822; Drovers, 2011

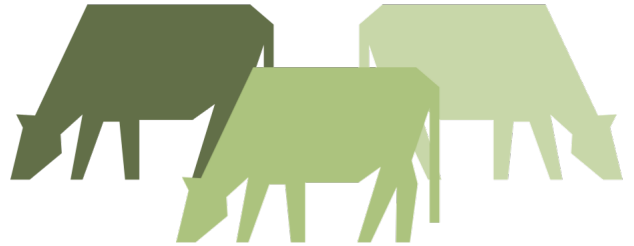
REA is determined by
measuring the
muscle area
of the ribeye.

REA is measured
between the
12th & 13th ribs



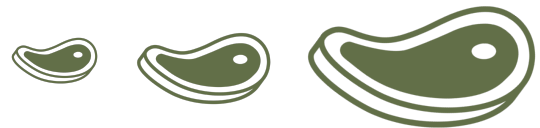
UA Extension, 2014.

**REA IS HIGHLY HERITABLE
AT 42%**



Gosey, 2003.

**LARGER REA =
INCREASED RETAIL PRODUCT YIELD**



UA Extension, 2014.



**BODY WEIGHT INFLUENCES REA
WEIGHT ADJUSTED REA
DETERMINES ANIMALS THAT ARE MUSCULAR VS. HEAVY**



TARGET FOR

Measured
in square
inches

1.1 to 1.9 sq.
inches per 100 lb.
carcass weight

Lemaster, 1999; UA Extension, 2014.